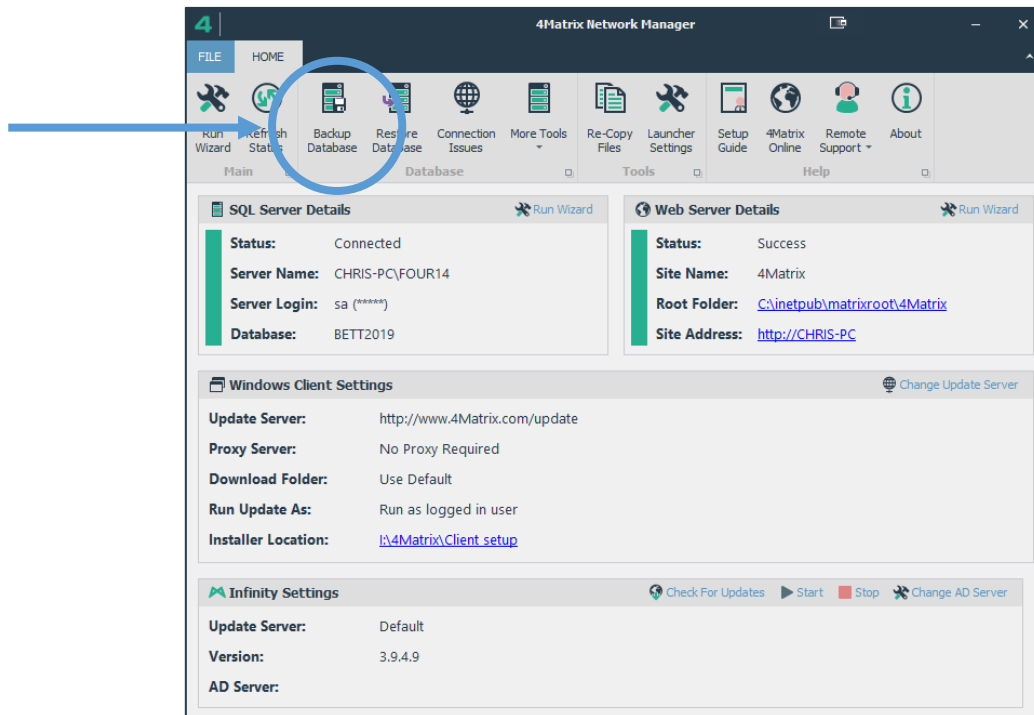


Moving Your 4Matrix Installation to a New Server

If you are transferring a database from a standalone PC to a server (or vice versa), re-installing, or moving to a new server:

- 1) First, make a backup of your 4Matrix database using the 4Matrix Network Manager Backup Database option (shown below).



- If you get an error when selecting this option, check the save location to see if it did make the backup or not. This is a known glitch on older versions.
- If it did not create the backup, use the **More Tools** option, select 'Make Current User Admin' and try the backup again. If this continues to fail, please contact us at <https://help.4Matrix.com>

- 2) Go to <https://www.4Matrix.com/downloads> and login. Contact info@4Matrix.com if you need a reminder of the details.
- 3) Download the Full Installer.
 - You can also download the latest Client MSI if you plan to re-deploy 4Matrix.
 - You can also download LauncherSettings.xml if you do not already have a version of this for your clients.
- 4) **Run the full installer. When prompted, choose to install a new server and database.** We recommend installing SQL 2016 or higher, and that you use a different server name to the previous setup.
- 5) Once the installation is complete, the 4Matrix Network Manager will appear as per the screenshot above. Use the **Restore Database function** and load your backup file. You should overwrite the database you just created.

Moving Your 4Matrix Installation to a New Server (Cont./)

- 6) Go to your new client setup folder (there is a link to this on the 4Matrix Network Manager, '*Installer Location*') and you will find a Client MSI and Settings file. **If re-deploying 4Matrix, you must overwrite the Client MSI with the one you have downloaded from the website and also add the LauncherSettings.xml.**
- 7) **Option 1:** Re-deploy Settings only: The server and/or database name have changed, which means that you need to re-deploy the client Settings file. This is an encrypted file that tells 4Matrix which server and database to use. Deploy manually or via GPO.

Option 2: Re-deploy the 4Matrix application: Deploy the 4Matrix client installation manually or via GPO. Both Settings and LauncherSettings.xml are included automatically with the installation, provided they reside in the same folder as the Client MSI.

For any issues with moving servers or installing 4Matrix, please contact us at <https://help.4Matrix.com>.